

Processing, merging and correlating geospatial data – Achieving valuable information!

Paula Lopes – Geoprocessing Analyst at HEX360

Who we are and what we do



- A Brazilian company specialized in remote sensing and intelligence

+ 500 million km² monitored in Brazil

+ 195 million km² monitored on land (Radar)

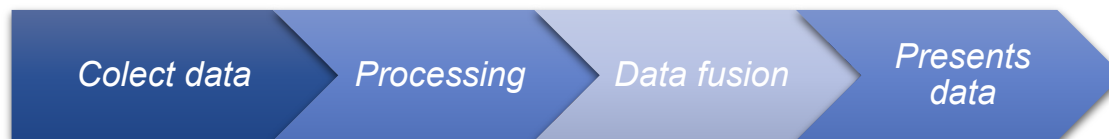
+ 100 million km² monitored at sea (Radar)

- Environment
- Registration
- Agribusiness
- Infrastructure
- Allotments
- Flooding
- Security
- Mining
- Electricity Sector
- Smart Cities
- Command and Control

AIRBUS | DIAMOND
DISTRIBUTOR



HEX360



Support platform for management **skynet**



Collects data with online connection to hundreds of satellites



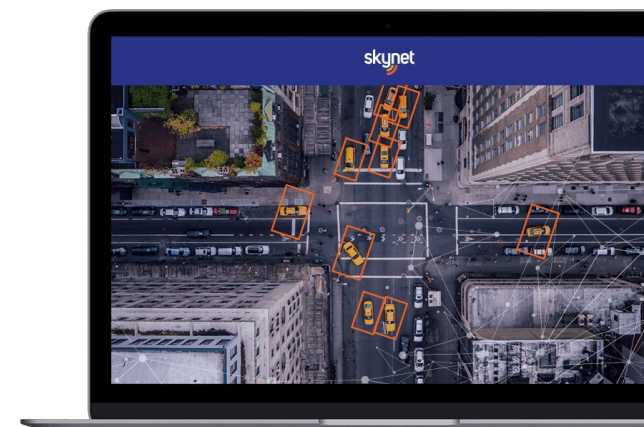
Automatically interprets satellite image using artificial intelligence

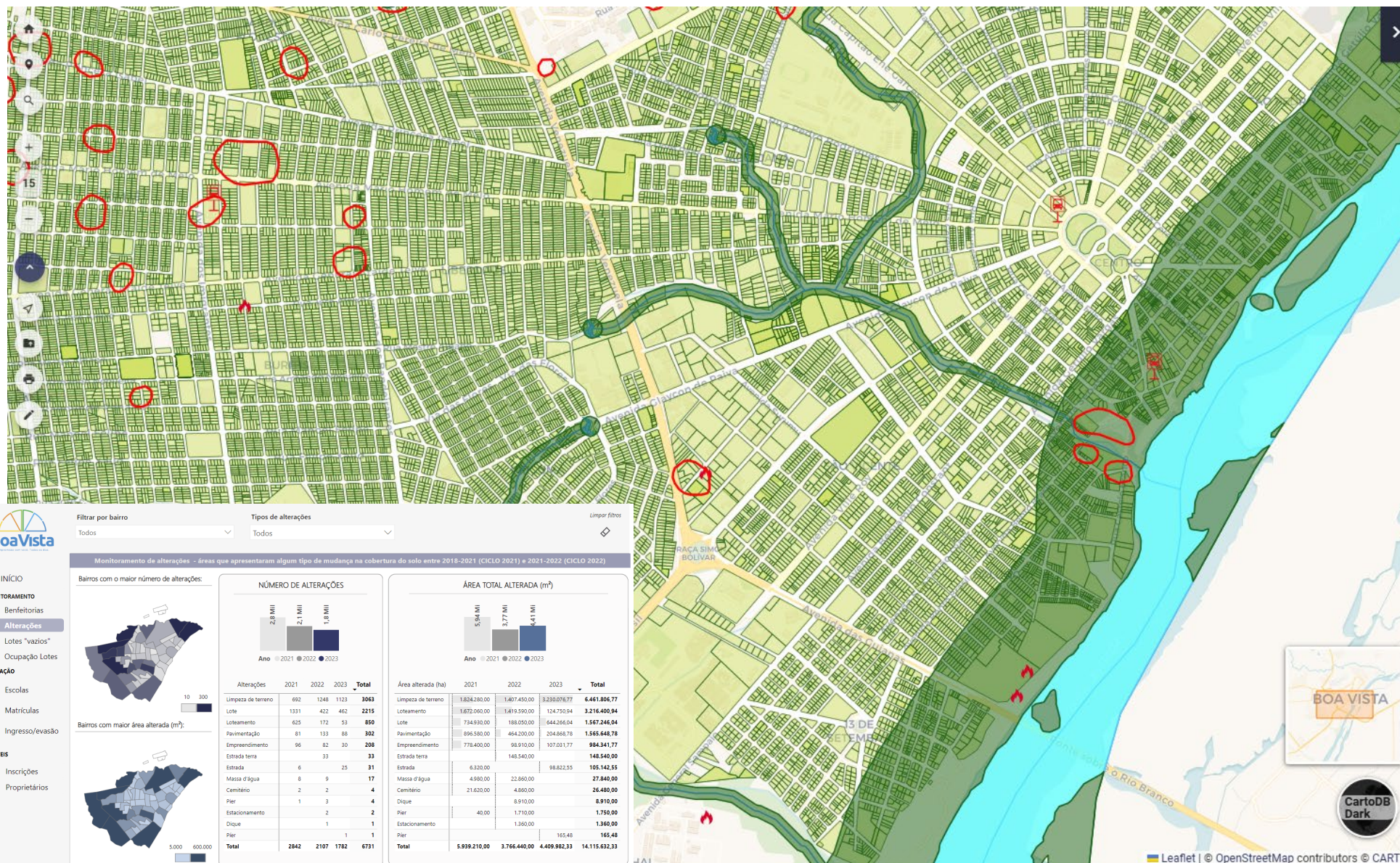


Stores all the information in a centralize geodatabase and cross-references it with other existing databases



Simple and intuitive interface for technicians, secretaries, the mayor and citizens

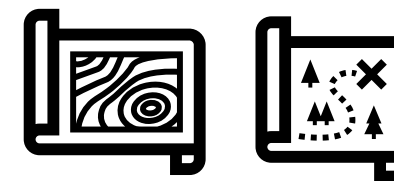




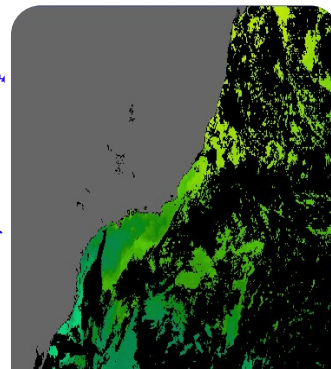
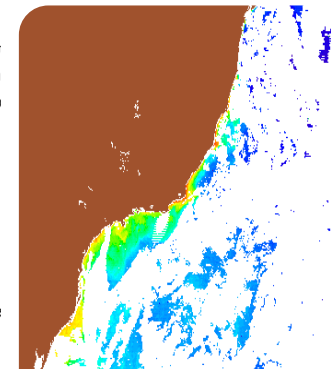
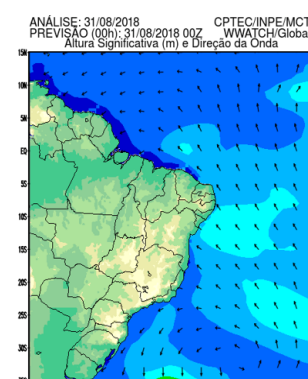
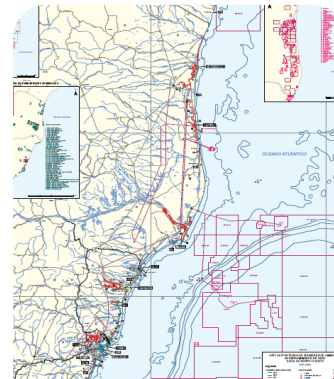
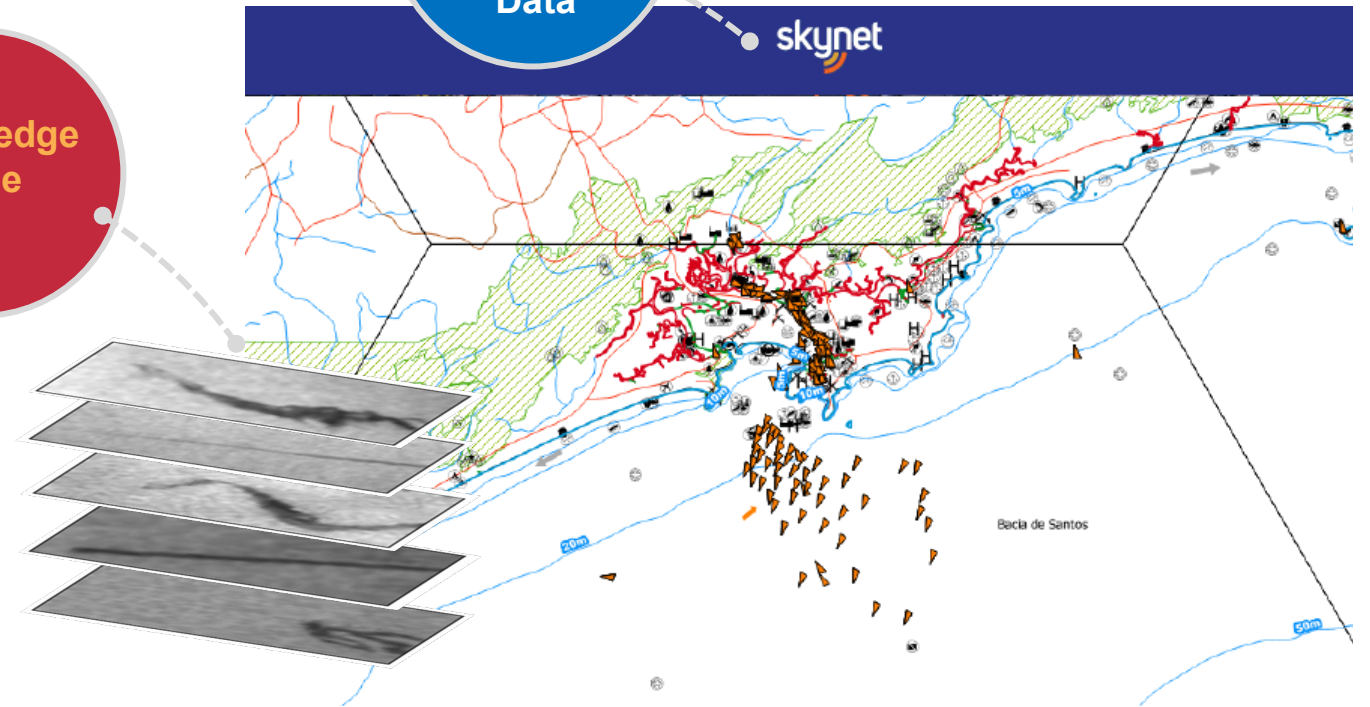
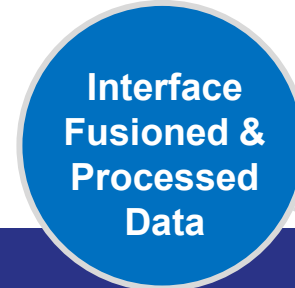
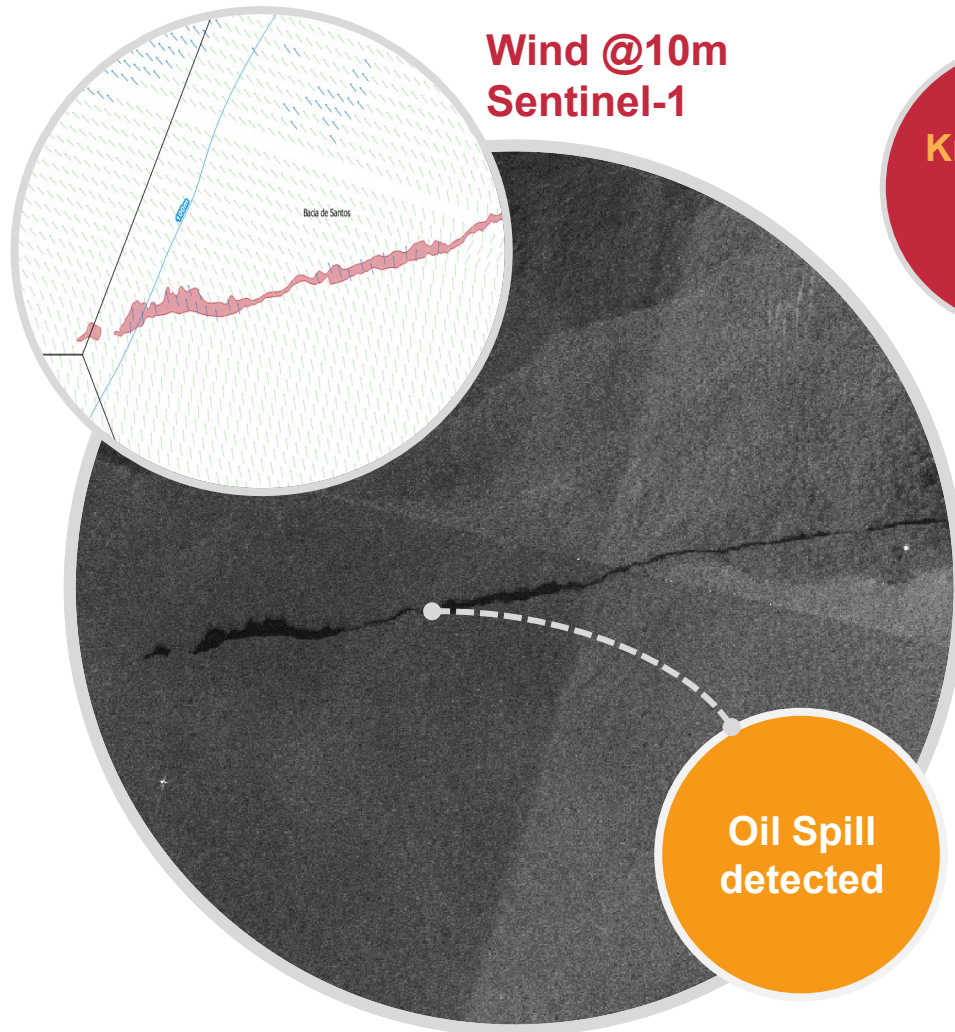
- CAMADAS**
- Gestão de Pessoas
 - Primeira Infância
 - Assistência Social
 - Praças e Selvinha
 - Equipamentos Públicos
 - Mobilidade Urbana
 - Infraestrutura e Obras
 - Iluminação Pública
 - Patrimônio Histórico e Cultural
 - Meio Ambiente
 - Usuários dos Ecopontos
 - Notificação Fiscalização 2024
 - Notificação Fiscalização 2023
 - Área Inundável Ano 2011
 - Opacidade
 - Cheia Rio Branco Ano



Delivering Valuable Information in Brazilian Challenging Projects



Oil Spill Monitoring

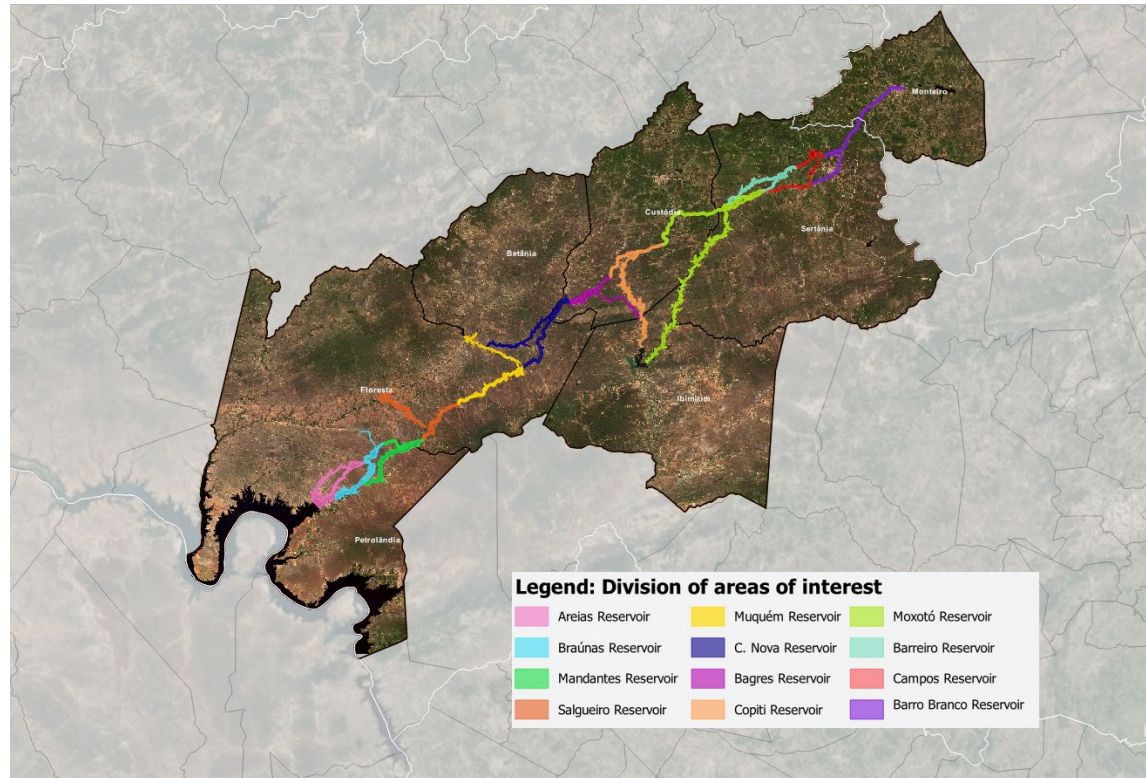


- Brazilian EEZ: Blue Amazon **4.5mi** sq km
- Brazilian coastal line: **7.000+** km

Infrastructure Monitoring



- Remote Sensing solution required to monitor huge infrastructure for integrity analysis and changes in land use.
- Mature technologies integration applied, InSAR, Artificial Intelligence.

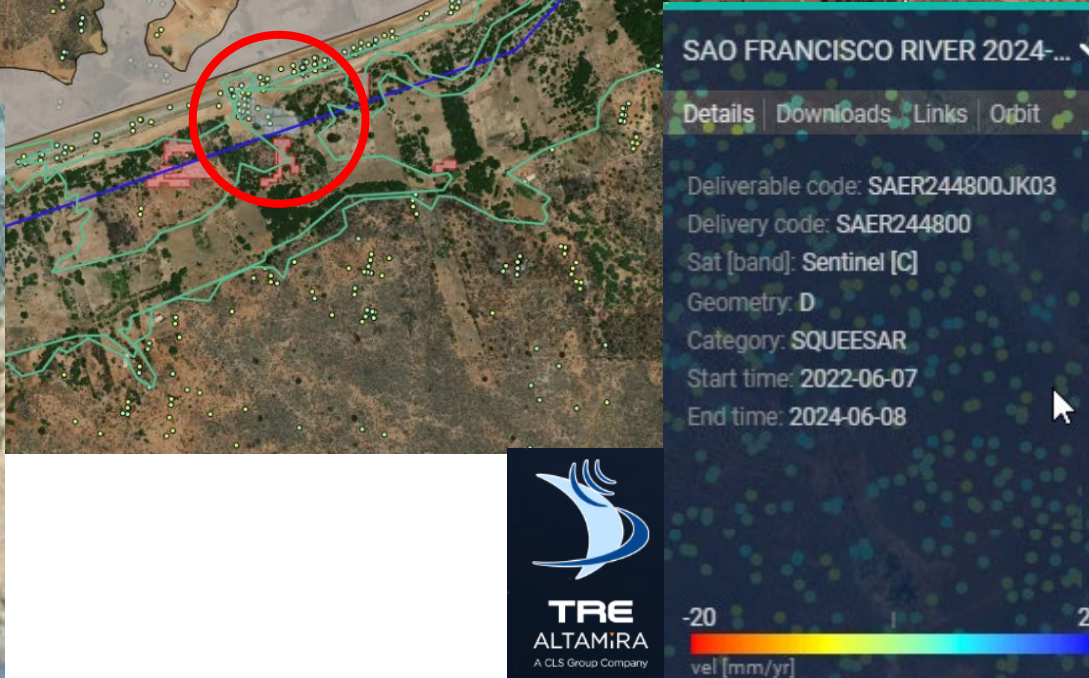
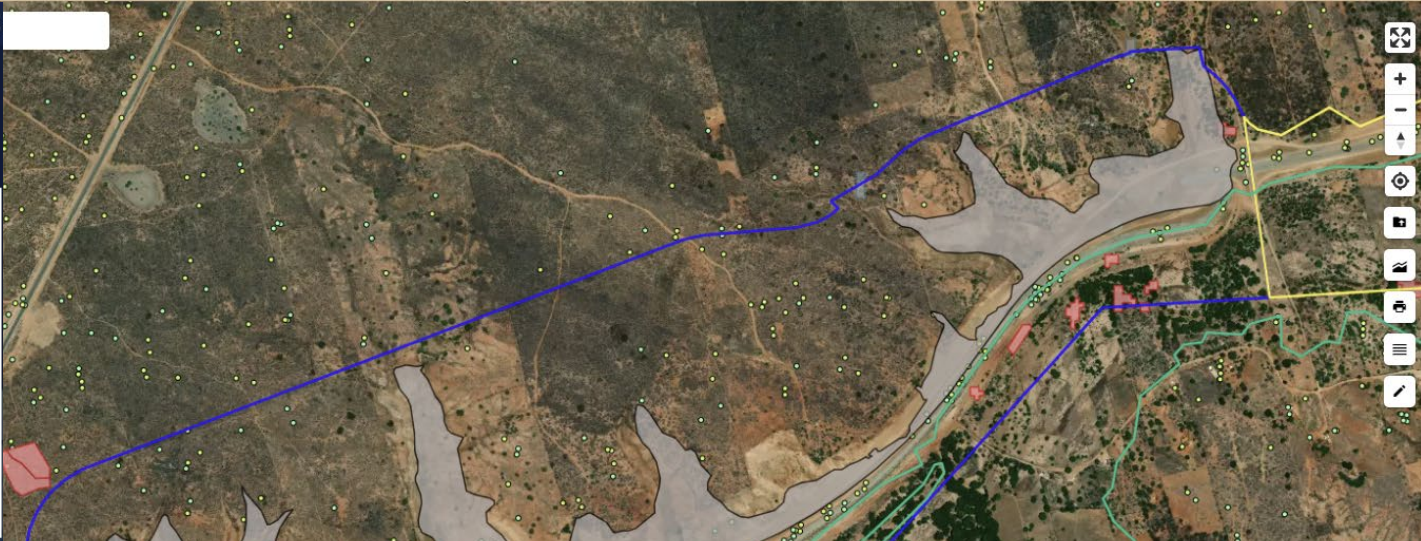


Transposition of São Francisco river

- 12 dams
- 220 km extension
- InSAR with Sentinel-1 to monitor surface movement
- Change detection with Sentinel-2 for land use
- Water bodies monitoring with NDWI (Sentinel-2)



Infrastructure Monitoring






Environmental monitoring



Camadas Ativas

Camadas de Sobreposição ativas

-  Terras Indígenas
-  Unidades de Conservação Federal
-  Antropismo Consolidado

Camadas do Usuário

Antropismo Consolidado - 2015

Terras Indígenas - FUNAI

Áreas de Proteção

Recursos Hídricos

Mineração

Imóveis Rurais

Infraestrutura

Limites

Grade Satélites

Environmental monitoring

Camadas de Sobreposição

Polígonos Prioritários

Monitoramento Diário

Alta Resolução e Mosaicos

Risco de Fogo e Focos de Calor (INPE)

Uso e Ocupação do Solo

PRODES (INPE)

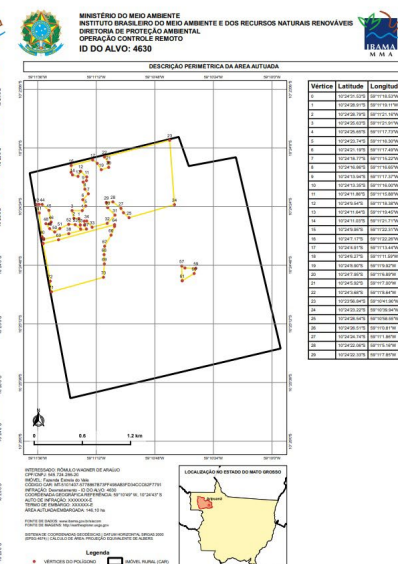
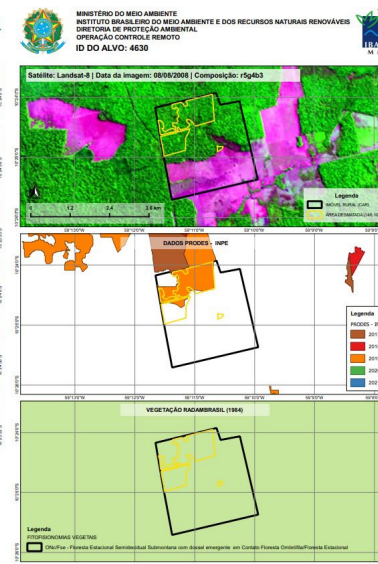
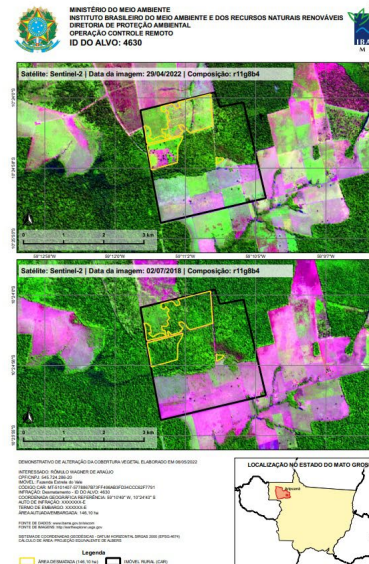
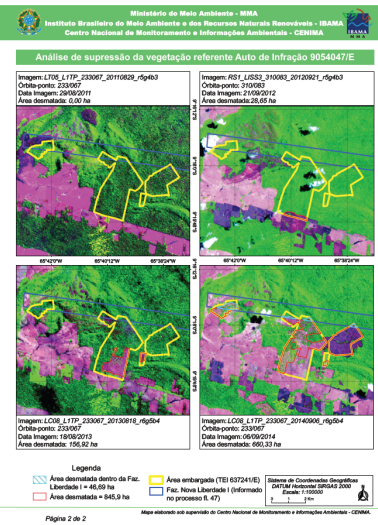
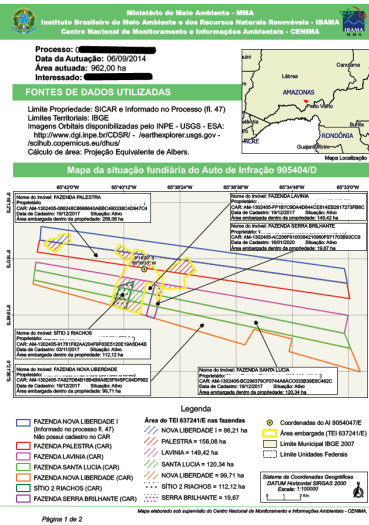
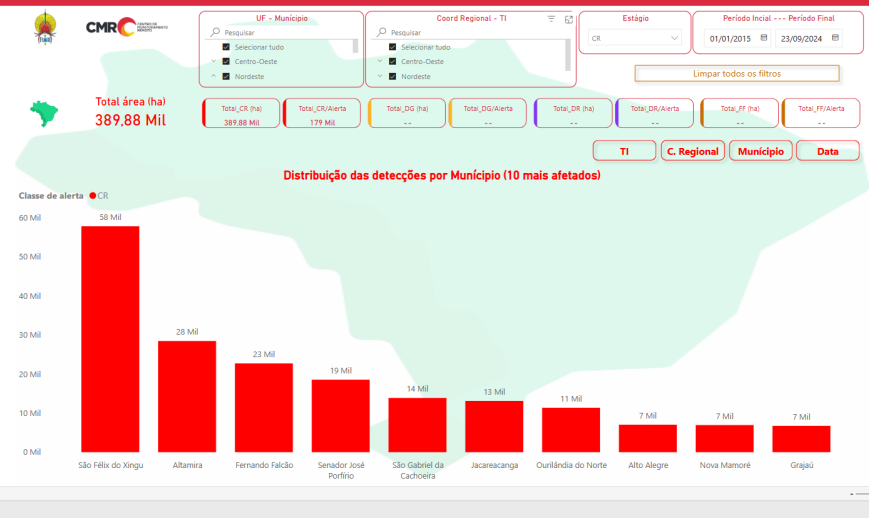
Documental

Meu acervo de imagens

Deter

A Analítico

Estadísticas





eventos.cmm.uchile.cl/ceds2024

